



# Annual Report 2022

Financial Statements and Trustee's report  
1 January 2022 to 31 December 2022

[www.communigrow.com](http://www.communigrow.com)

Charity no. 1159534

# Contents

- 03** Chairman's Introduction
- 04** About Communigrow
- 05** Our Impact - Highlights
- 06** Our Impact - Education
- 09** Our Impact - Well-being
- 10** Volunteers
- 12** Working in Partnership
- 13** Fundraising
- 14** Future Plans
- 15** Governance and Organisational Structure
- 17** Finance Report
- 22** Independent Examiner's Report

# Chairman's Introduction



I am very pleased to introduce the 2022 annual report which tells Communigrow's story, what it achieved last year, the impact it has had and the ever growing support we receive both financially and from the active involvement of so many people.

Communigrow is a horticultural charity providing educational opportunities and activities for the whole community, including special needs, vulnerable and disadvantaged young people and adults. For these young people and adults we are able to promote their personal development and sense of achievement as well as providing them and all our other beneficiaries with horticultural learning opportunities. Everyone who comes to the field has the opportunity to reconnect with nature and learn about growing their own food in a sustainable way. A key benefit of what we do is being able to promote health and wellbeing.

Communigrow moved forward in a number of ways in 2022. We appointed an Operations Manager from the start of the year who has been able to coordinate and manage our activities on the ground. We have expanded our horticultural team to include a dedicated Community Gardener and Produce Gardener to support our teaching and volunteering sessions and to increase our sustainable food production. Increasing our income to £257,728 an increase of 102% on 2021, has also allowed us to take on more growing staff and improve our facilities. It has also allowed us to appoint a part time community and corporate fundraiser which has advanced our income diversification strategy. These appointments and our improved facilities have provided a platform to expand the services we offer and to increase our reach to additional beneficiaries through our new outreach work, whilst ensuring that the services we offer continue to have more impact and a greater benefit to our beneficiaries and the local groups and communities we support.

We were delighted to have the work we do recognised in the two awards we received in 2022. These were the first Produced in Kent Community Award and the Cauldron Community Champion Award.

As a board of trustees, we are greatly encouraged by the stories we hear on the impact that Communigrow is having on our beneficiaries and some of these stories are told in this Annual Report.

I conclude with a thank you to the trusts and foundations and all of our other donors who support us. We are very grateful for all the financial support we continue to receive and which allows us to do what we do. I would also like to thank our staff and all our volunteers. Both staff and volunteers are vital to the success of Communigrow and their efforts and enthusiasm on the field, with the weekly school sessions and workshops the planting and growing and the social media and marketing support is very much appreciated. Finally, I would also like to thank Simon Webley and Helen Turner who were two of the founding trustees and who retired in 2022. Since Communigrow's inception, they have been hugely dedicated to the charity and worked tirelessly in supporting its work. Communigrow as it is now, owes much to their visionary contributions.



**Caroline Pearce**

Chair of the board of trustees



# About Communigrow

Communigrow is a food education charity, established in 2011 as a locally focused community gardening group in West Kent. The organisation became a registered charity in 2014. Communigrow is based on a 2.4 acre site leased from the East Malling Trust, which is where we grow our produce in a sustainable way.

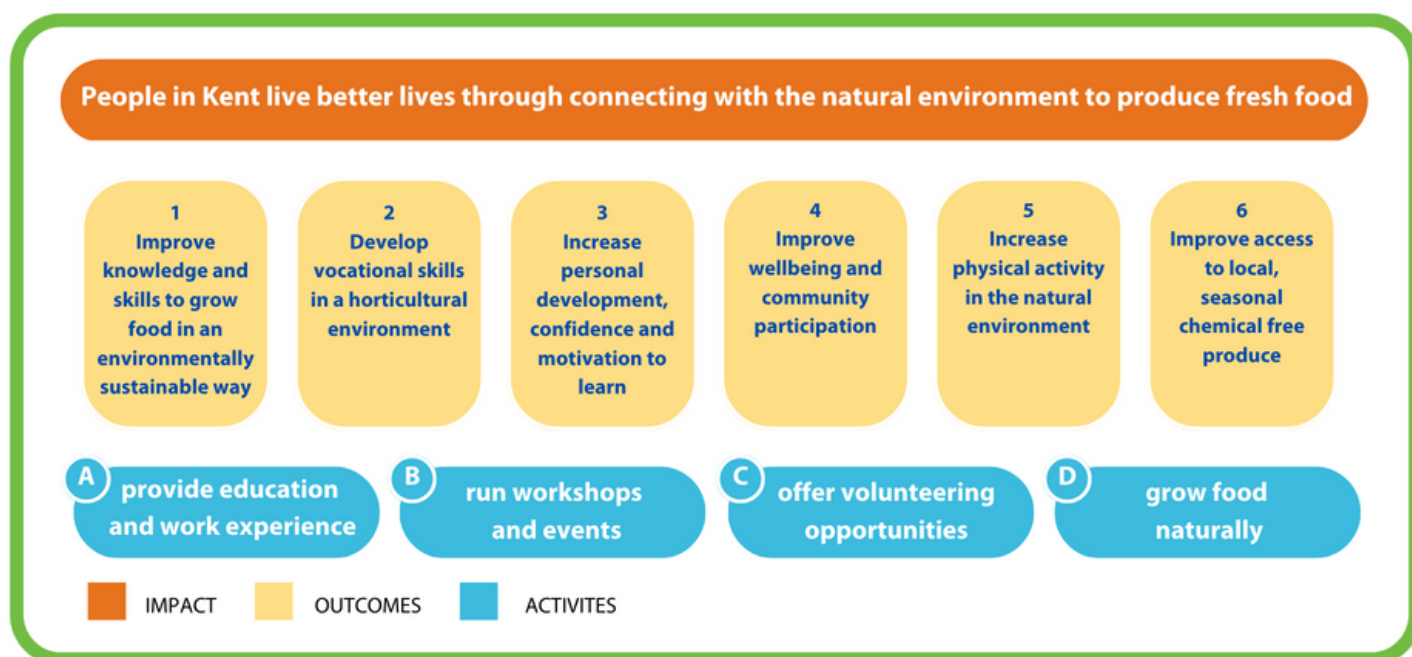
Our services and support continue to develop and each year more people benefit. Our work with children and young people continues to grow with more schools engaging with us every year and increased attendance at our family workshops. In 2022 we began our outreach work taking our skills and knowledge into local communities and engaging with residents and local community groups.

## Our Mission, Objectives and Public Benefit

To use horticulture to educate, support and inspire everyone in our community by enriching their lives and, for disadvantaged groups, by achieving greater independence.

Our objectives are to support, inspire and empower children, young people and adults of all abilities by providing accessible horticultural experiences where people in our community can work collaboratively to appreciate and understand how food is grown and the many benefits it offers to their health and wellbeing, inspiring them to lead fuller lives in a sustainable community. Our work is of benefit not only to our beneficiaries but also their families, carers, local authorities and other partners, as well as the local communities in which we operate.

At our Away Day in October 2022 the whole Communigrow team contributed to the creation of our vision and plans for the next five years. We completed our 'Theory of Change' strategic plan consolidating our existing outcomes to six core themes:





# Highlights

Highlights and achievements of the last year include:

- Welcoming 614 individuals including the young people and adults who attended our classes and workshops, many of whom come on a regular basis (443 in 2021)
- The introduction of the Communigrow Achievement Awards
- Winning the first Produced in Kent Community Award and the Cauldron Community Champion Award
- Developing our outreach work with The East Malling Centre and local social housing providers
- Creating our Men's Shed project as our own 'Communished'
- Improving the ecosystem at Communigrow to include additional resources to attract and provide habitats for local wildlife and encourage wider biodiversity for the benefit of our growing activities and our schools curriculum
- Diversifying our sources of income and increasing the charity income to £257,728 from (£127,480 in 2021) by developing social enterprise, corporate and individual giving as well as grants and trusts fundraising
- Obtaining funding for new solar panels via the Growing Green Low Carbon Kent programme
- Adapting our growing techniques and practices to mitigate the effects of climate change by introducing a Mediterranean style area, increasing our no-dig growing areas, experimenting with arid planting and using companion planting as a natural alternative to pesticides.

We are proud of these achievements, some of which are described in more detail overleaf.



# Education

## Schools and SEND

We have continued to develop our relationships with local SEN Schools and the educational and skills development activities that we offer for a large number of neurodiverse students.

Five Acre Wood, a school for students aged 11-18 with severe and complex learning difficulties, including Autism Spectrum Condition, attends Communigrow weekly to take part in our growing activities.

Grow 19, SEND college for learners aged 18-25, attends weekly sessions for horticultural experience and activities that increase their social and communication skills to support their City & Guilds qualifications.

Grange Park School supports students with an Autism Spectrum Condition. Attending weekly for work experience and the development of life skills, pupils assist with all aspects of food production.

In addition to the SEN Schools, we now work with Bethany School, whose students visit weekly to learn about local food production and its environmental benefits as part of the pupil enrichment programme.

St James the Great Academy, Little Growers After School Club, is run by Communigrow on the school site in East Malling. 10 children take part weekly, learning about the benefit of growing and eating fresh food.

### Joining in @ Little Growers after-school club

### Max's Story

Max\* (7 y/o), a Little Growers member, is under assessment for ADHD and ASD. His mother shared that he finds attending school difficult, but loves going to the gardening club on a Tuesday.

The School Liaison Officer told us, "The club provides a relaxed environment where Max knows exactly what is expected of him, is able to relax, listen and process instructions. Max feels listened to and will ask questions and make suggestions which he would not do in class."

## Home Education

Our home education programme supports learners aged 4 to 16 to learn new skills, including seed propagation, pond life and amphibian study linked to the mainstream curriculum. In 2022 we introduced a new woodworking group for 12-16 year olds, teaching basic carpentry techniques.

## Communigrow Awards

In 2022 we introduced our Communigrow Award scheme celebrating the achievement of learning basic horticultural and woodcraft skills. These awards support the learning of important life and vocational skills. In the year we had 36 students enrolled in the awards programme.





**"Interesting & engaging, whilst being relaxed & inclusive. Sitting together to enjoy a meal we had cooked was a lovely end to the session."**

SUMMER FAMILY WORKSHOP PARTICIPANT

**"A calming atmosphere. Excellent staff!"**

**"I most enjoyed making pizza & picking salad veg."**

AUTUMN FAMILY WORKSHOP PARTICIPANTS



## Emma's Story

### Developing physical skills and confidence

Emma\* (16 y/o) attends with her SEND school. She is autistic with complex physical and learning needs.

Emma was initially reluctant to engage and required physical support moving around the field. We agreed on a plan to help her develop her physical skills and confidence. For example, Emma was encouraged to hold the handles of a wheelbarrow with support to lift and move it. Gradually she was able to take the weight alone and, with lots of encouragement, began to really enjoy the task. Since then Emma has required minimal physical assistance at Communigrow. Her communication skills developed with this confidence and we saw her joining in with a loud speaker during our 2022 challenge.

Chris\* (School staff) said: "Communigrow has certainly been a catalyst in Emma's recent improvement at school. It's fantastic to see her enjoying herself and working as part of the class."



# Education in the Community

## Partnership Workshops

Nine targeted workshops were delivered with local partners Kent County Council and Tonbridge and Malling borough Council, Space 2 Be Me and INVOLVE. Young carers and young people with learning difficulties have learnt about wildlife and enjoyed field-to-fork cooking.

We delivered thirteen family workshops to local residents giving them the opportunity to take part in the Communigrow experience.

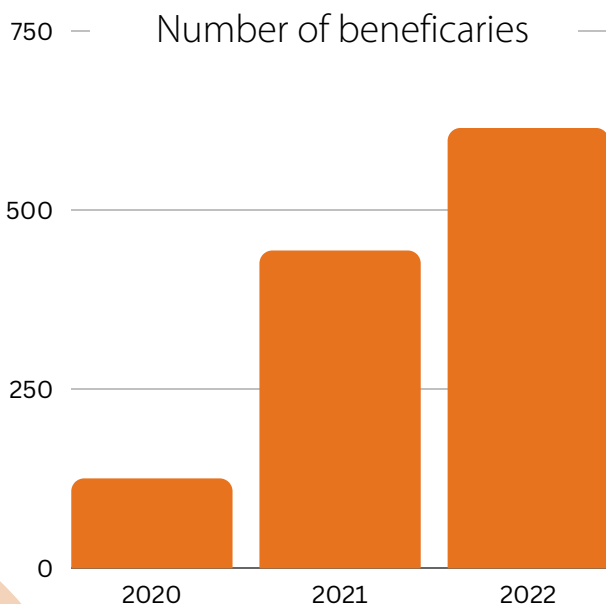
### Bea's Story

#### Reducing anxiety and improving confidence

Bea\* (12 y/o) is autistic, has selective mutism and generalised anxiety disorder. These affect every part of her life and can be debilitating; they often lead to her being unable to attend events or even leave the house. Bea attended four Eco-Explorer Workshops at Communigrow over the Summer.

Bea's mum says, "To find somewhere like this which was so inclusive and understanding was incredible. The difference attending the summer sessions made to my daughter's life was immeasurable. She became happier, less isolated, less anxious and more confident."

Our partnership and engagement with the East Malling Centre and local residents has strengthened during 2022 allowing us to reach more disadvantaged members of our community. This included sessions run alongside the Centre's Community Larder, Little Growers Sessions (in partnership with the Children's Centre), weekly Nature Tots sessions for pre-school children and drop in natural craft workshops during the school holidays.



# Wellbeing Programme

## Wellness Wednesday

This is the second year we have offered our Wellbeing sessions to the over 55's and younger people with long term health conditions. Funded by Involve Kent we have run over 40 sessions supporting 42 people to improve overall wellbeing, improve their confidence and help prevent social isolation.

Participants take part in general gardening activities, are physically active and connect with nature. They meet new people in a friendly and relaxed outdoor environment.

With new found confidence, Wellbeing members often move on to becoming committed Communigrow volunteers making a long term commitment to being part of the team.

### Judy's Story

#### Wellness Wednesday sessions - Improving Wellbeing

"Wellness Wednesday is such a lovely group of kind supportive people, with a caring, creative leader. It has given me two hours every week where my mind is able to just switch off.

I enjoy the different activities, I contribute my ideas, I've learnt so much & feel included in the development of Communigrow.

We always make time for each other & are very considerate of each person's needs, we have cuppa & cake ...most of all we chat, laugh & get to know people & make new friends."

JUDY, PARTICIPANT OF THE WEDNESDAY WELLNESS SESSIONS

**"It is good for my mental health and general wellbeing as I can get away from my home office desk job and socialise with like minded people."**

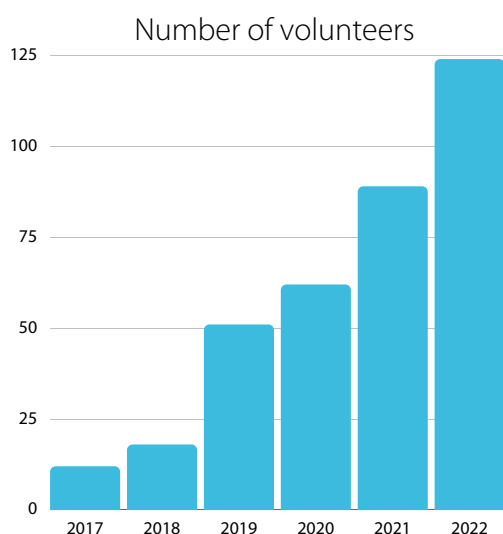
WELLBEING GROUP PARTICIPANT



# Volunteers

Volunteering is at the heart of everything we do at Communigrow. Our volunteers are involved in every aspect of our work. The diversity of volunteer roles that we provide allows us to appeal to people of all ages, abilities and interests. We provide opportunities for volunteers to use their existing skills and knowledge but also provide support to learn new skills.

During 2022 we were supported by 124 volunteers who donated 5958 hours, a great increase on last year. 79 were regular volunteers and 45 attended our 'Get Away Days' corporate volunteering events.



**"Our Away Day was over & above my expectations - being involved with such a positive & enjoyable project. The guided tour was excellent & I learnt a great deal in a short amount of time. It was great to be able to give such crucial support to a local charity."**

KCC EMPLOYEE, ATTENDEE OF  
CORPORATE  
VOLUNTEERING DAY

Our regular volunteers assisted on the field in the planting, growing and harvesting of our produce and with our educational activities including family workshops, weekly schools sessions and ad-hoc activities for other groups. Volunteers were invaluable in carrying out maintenance, clearing and on-going horticultural tasks. A dedicated group of volunteers also helped with administration and strengthened the charity's digital presence.

In the summer we launched our pilot Men's Shed project 'Communished'.

Led by volunteer Vincent, maintenance and woodcraft activities were delivered by the 'Shedders'. This group has made a host of improvements and repairs to our resources and structures and greatly helped Communigrow enhance its environment.





"It's therapeutic, cost saving, planet saving, chemical free and enormously good for your own well-being to get out into the fresh air and reap the pleasure of watching something grown that you did yourself."

VOLUNTEER (GROWER)

"People often learn from each other. Volunteers often help each other outside of the field. People ask each other for and share tips and advice, both of what to grow and eat but also just general shared interests."

VOLUNTEER (GROWER)



## VOLUNTEER HOURS 2022

**5958**

Volunteered hours  
Between 1st January and  
31st December 2022

**£64,079**

Estimated economic  
value of time donated  
by volunteers

Six of our volunteers have now joined the Communigrow staff team as 'Bank Staff' these individuals have helped us to expand our services, reach more people and develop our outreach support.

Overall, volunteers made an essential contribution to the work of the charity and were active ambassadors who also helped the charity to reach new volunteers and local groups.

We hugely appreciate volunteers' efforts in continuing to make Communigrow a success.

# Working in Partnership

Working in partnership is vital to Communigrow, helping us to raise our profile locally and supporting and being supported by other local organisations.

We are proactive in identifying and building relationships with community, voluntary, commercial and statutory partners who share our vision and support our objectives.

We are committed to reaching individuals and communities most in need of our help. Our offer and support helps address a number of socio-economic issues affecting individuals and families in our communities.

Our partners provide us with both financial and in-kind support that has enabled us to grow our charity, improve our resources, and reduce our environmental impact.

Our partners include:

Crossroads Kent Young Carers

East Malling Centre

East Malling Trust

IMAGO Community

Involve Kent

Kent County Council

Kent Virtual Schools

KRAN - Kent Refugee Action Network

NIAB

Space 2 Be Me

Tonbridge & Malling Borough Council – One YOU



PRACTICAL SUPPORT ON OUR WILDLIFE WALK FROM KCC



# Fundraising

2022 was a very successful year for increasing our income from a variety of Trusts and Foundations, which has enabled us to achieve the following substantial progress in the development of our charitable aims:

- Build a field shelter to allow us to continue education sessions even in poor weather conditions
- Deliver 32 workshops during school holidays with 338 young people attending
- Invest in our horticultural team and our volunteers to continue the development of a sustainable and engaging growing programme
- Create a new wildlife pond to enhance our education curriculum and encourage biodiversity
- Purchase new tools and woodwork equipment for the education team to use in their teaching programme
- Work towards carbon zero with funding for powerful solar panels and battery storage
- Help cover core staffing costs.

Additionally, our newly appointed Corporate and Individual fundraiser has allowed us to diversify our income, increasing our fundraising from individuals and corporate donors from £5,585 in 2021 to £31,925 in 2022. This has strengthened the perception and image of Communigrow as a credible and capable educational charity worthy of endorsement, sponsorship and investment.

We are hugely appreciative of the support we have received from:

Albert Hunt Trust	Involve Kent
Atwood Benefits UK Ltd	John Lewis
Barbara Ward Foundation	John Swire 1989 Charitable Trust
Cauldron	KCC Reconnect
Chapman Charitable Trust	KCF Anniversary Fund
Childwick Charitable Trust	KCF Development Fund
Clarion Futures	KCF Minerva Family & Howard Family
CLA Charitable Trust	Leigh Trust
The Cleary Foundation	Linda Hogan Community Fund
Cllr Andrew Kennedy (KCC Member Grant)	Monica Rabagliati Charitable Trust
Cllr Trudy Dean (KCC Member Grant)	National Lottery Community Fund
Cobtree Charitable Trust	New Earth Solutions
Cole Charitable Trust	Perrys Chartered Accountants
Colyer-Fergusson Charitable Trust	Persimmon Homes
Dandara	Robert Gavron Charitable Trust
David Solomon Charitable Trust	Souter Charitable Trust
ExPAT Foundation	UK Community Renewal Fund
Garfield Weston Foundation	United Living
Golding Homes	Waitrose
Hasluck Charitable Trust	Whitehead Monckton Charitable Foundation
Hollick Family foundation	Woodroffe Benton Foundation
Ian Askew Charitable Trust	



PERRYS CHARTERED  
ACCOUNTANTS, POND DIGGING

Our total income for 2022 from grant funding, donations and our charitable services amounted to £257,728 (£127,480 in 2021).



# Future plans

## Horticulture

- Extend our growing areas that will also demonstrate innovative growing methods including inspirational 'show garden' areas that replicate the size and possibilities of local residents' gardens
- Develop a sustainable composting system
- Respond to the demands of climate change by experimenting with arid planting, expanding our perennial vegetable beds, planting windbreak hedges, no-dig areas and mulching
- Create a Tea Garden and edible flower area
- Build partnerships with local food outlets/restaurants, to supply locally grown, seasonal produce

## Education

- Increase the number of schools we work with; on site and in the community
- Continue the development of our 'Communigrow Achievement Award' programme to help us evidence and celebrate the skills and learning outcomes achieved by our beneficiaries
- Improve our learning areas to better support neurodiverse children and young people

## Wellbeing

- Increase our wellbeing programmes, identify local healthcare partners and social prescribers
- Develop our 'Communished' project to attract more diverse volunteers and help us develop our facilities and services
- Improve facilities for the staff and volunteers on site
- Provide staff support for professional development activities

## Social Enterprise

- Increase our income diversification through, for example, the development of viable social enterprise activities (e.g. corporate away-days, viable products)

## Environment and Sustainability

- Reduce fossil fuel use and invest in sustainable resources and equipment
- Increase and develop our wildlife areas to provide a habitat for local wildlife
- Increase surface water capture to reduce our dependency on local water sources

All of which will benefit our growing areas, our sustainability credentials and our horticultural educational offerings

## Fundraising

- Develop a range of donation opportunities, fundraising events and corporate partners
- Identify empathetic funders and develop long-term relationships that will support our organisational growth

# Governance and Organisational Structure

Communigrow is a Charitable Incorporated Organisation incorporated in 2014 and is governed by a board of trustees

<b>Charity Name</b>	Communigrow
<b>Registered Charity No.</b>	1159534
<b>Contact Address</b>	Hazel Hall, Church Road, West Peckham, Kent, ME18 5JL
<b>Trustees during 2022</b>	Caroline Pearce - Chair Anthony Blackman David Field Martin Long Eleanor Nicolas Alan Piper Helen Turner Greg Ward Simon Webley
<b>Independent Examiner</b>	Priscilla Asirifi
<b>Bank</b>	The Co-operative Bank PO Box 200, Skelmersdale, WN8 6 WT
<b>Website</b>	<a href="http://www.communigrow.org.uk">www.communigrow.org.uk</a>
<b>Email</b>	<a href="mailto:info@communigrow.org.uk">info@communigrow.org.uk</a>



# Governance and Organisational Structure

## Leadership and Management

The trustees meet every other month and are responsible for the charity's activities for monitoring progress and policies, developing the charity's strategy and for risk management. In 2022 we also adopted the Fundraising Regulators Code of Practice and registered with the Fundraising Regulator.

The trustees recognise that they are required to meet the objects of the charity and provide a public benefit. In making their decisions, the trustees follow the Charity Commission's guidance on public benefit.

In 2022, two of our founding trustees, Simon Webley and Helen Turner retired. Martin Long was appointed as the finance trustee in place of Eleanor Nicholas and for a brief time Greg Ward was also a trustee, but was unable to continue owing to other commitments.

We are very fortunate in having a skilled and active board of trustees who are passionately committed to Communigrow and its work. In addition, the board of trustees is supported by a full-time operations manager and engages business development and fundraising consultants to assist with business development and income generation.

When recruiting trustees, the board of trustees identifies any skills gaps and looks for individuals who can provide expertise and leadership. There is an induction programme for new trustees and all trustees undertake training throughout the year.

## Major Risks Statement

The trustees have assessed the major risks of the charity including, governance, operations, financial and external risks. They are satisfied that systems and procedures are in place to mitigate the major risks.

## Reserves Policy

The charity needs reserves to enable it to progress to completing both its long term projects, and its current activities and fluctuations in receipts and payments. The policy is to hold £50,000 for working activities. The level has been set to take account of the following:

1. Contingency: unexpected expenditure in the event of an emergency;
2. Cash-flow: situations where a bill has to be paid before the money to cover it has been received;
3. Commitment: a commitment to expenditure which cannot be covered by the annual income
4. Closure: the charity becomes financially unsustainable and has to be wound up.

'The trustees declare that they have approved the trustees' report above.

Signed:



Date: 03/07/2023

Caroline Pearce, Chairman



# Finance Report

## Communigrow Statement of Financial Activities for the Year Ended 31st December 2022

Notes	Unrestricted Funds £	Restricted Funds £	Total 2022 £	Total 2021 £
<b>Incoming resources</b>				
Charitable activities	7,882	4,229	12,111	8,261
Community fundraising	2,428	4,889	7,317	1,029
Corporate donations	9,500	9,779	19,279	3,000
Donations	1,334	-	1,334	1,557
Sponsorship	1,899	2,096	3,995	-
Grants	8,772	202,856	211,628	103,228
Vegetable sales	-	2,064	2,064	4,069
Other income	-	-	-	6,336
<b>Total</b>	<b>31,815</b>	<b>225,913</b>	<b>257,728</b>	<b>127,480</b>
<b>Resources expended</b>				
Admin/utilities	996	4,567	5,563	3,063
Consumables	2,346	1,791	4,137	1,899
Equipment	197	1,016	1,213	4,643
Fundraising & business dev	6,359	9,052	15,411	9,000
Insurance & rent	-	2,340	2,340	2,005
Marketing	336	304	640	938
Services (including salaries)	1,552	128,538	130,090	83,677
<b>Total</b>	<b>11,786</b>	<b>147,608</b>	<b>159,394</b>	<b>105,225</b>
<b>Net incoming resources for the year</b>	20,029	78,305	98,334	22,255
Total funds brought forward	43,008	72,258	115,267	93,012
<b>Total funds carried forward</b>	<b>63,037</b>	<b>150,563</b>	<b>213,600</b>	<b>115,267</b>

The Statement of Financial Activities include all the gains and the losses in the year and therefore a statement of total recognised gains and losses has not been prepared.

All the above amounts relate to continuing services.

The notes on pages 19-21 form part of the financial statements

# Finance Report

## Communigrow Balance Sheet for the Year Ended 31st December 2022

	Notes	Total 2022 £	Total 2021 £
<b>Fixed assets</b>			
Tangible assets	2	13,987	-
<b>Current Assets</b>			
Debtors	3	2,228	-
Cash at bank and in hand		197,901	115,267
		200,129	115,267
<b>Creditors:</b>			
Amounts falling due within one year	4	516	-
<b>Net current assets</b>		199,613	115,267
<b>Total net assets</b>		<b>213,600</b>	<b>115,267</b>
<b>Funds of the Charity</b>			
Restricted income funds		150,562	72,967
Unrestricted funds		63,038	42,300
<b>Total funds</b>		<b>213,600</b>	<b>115,267</b>

These accounts have been prepared in accordance with the provisions applicable to companies subject to the small company's regime.

These financial statements were approved by the Board of Trustees and authorised for issue on 3rd July 2023 and signed on their behalf by Caroline Pearce, Chairman



The notes on pages 19-21 form part of the financial statements

# Finance Report

## Notes to the Financial Statements for the Year Ended 31st December 2022

### **1) Principle accounting policies**

#### **Accounting convention**

The financial statements are prepared under the historical cost convention and in accordance with the Financial Reporting Standard for Smaller Entities. In preparing the financial statements the charity follows best practice laid down in the Statement of Recommended Practice - Accounting and Reporting

#### **Going concern**

CommuniGrow, at 31 December 2022, had unrestricted funds of £63,037 and a cash balance of £197,901, and as such the trustees consider it appropriate to prepare the accounts on a going concern basis.

#### **Incoming resources**

Income is accounted for when the charity has entitlement to the funds, any performance conditions attached to the income have been met, it is probable that the income will be received and the amount can be measured reliably.

#### **Resources expended**

Expenditure is included on an accrual basis once there is a legal or constructive obligation to make a payment to a third party, it is probable that settlement will be required and the amount of the obligation can be measured reliably.

#### **Tangible fixed assets and depreciation**

Tangible fixed assets costing £500 or more are capitalised.

Depreciation is charged so as to allocate the cost of tangible fixed assets over their estimated useful lives, using the straight-line method.

Depreciation is provided on the following basis:

General equipment - 20% straight line

#### **Cash at bank and in hand**

Cash at bank and in hand includes cash and short-term deposits with a maturity of three months or less.



# Finance Report

## 2) Tangible Fixed Assets

	General Equipment
<b>Cost</b>	
At 1st January 2022	—
Additions	£14,189
Disposals	—
At 31 December 2022	<u>£14,189</u>
<b>Depreciation</b>	
At 1st January 2022	—
Charge for the year	£202
At 31st December 2022	<u>£202</u>
<b>Net Book Value</b>	
At 31 December 2022	<u>£13,987</u>

## 3) Debtors

2022

2021

Amounts falling due within one year

VAT

£2,228

—

## 4) Creditors

Amounts falling due within one year

Trade creditors

£516

—

# Finance Report

## 5) Funds

### Unrestricted funds

Comprise those funds which the trustees are free to use in accordance with the charity's general purposes.

### Restricted funds

Restricted funds comprise donations and grants for specific activities intended by the donor.

## 6) Independent examiner's remuneration

The independent examiner's remuneration amounts to an independent examiner fee of £ Nil (2021 - £ Nil).

## 7) Trustees' remuneration

During the year, no Trustees received any remuneration or other benefits (2021 - £Nil).

## 8) Staff costs and pensions

The charity operates a defined contribution pension scheme

	2022	2021
Wages and salaries	£116,199	£76,374
Social security costs	£9,083	£4,664
Contribution to defined contribution pension scheme	£4,808	£2,639
	<b><u>£130,090</u></b>	<b><u>£83,677</u></b>

The average number of persons employed by the charity during the year was as follows:

	2022	2021
Staff	7	4
Contractors	13	7
	<b><u>20</u></b>	<b><u>11</u></b>

## 9) Related party disclosure

There were no related party transactions for the year ended 31 December 2022 (2021 - £Nil).

# Independent Examiner's Report

DocuSign Envelope ID: AADDAC34-74BD-48F2-95BF-7F6D0F2DB4BB

## Independent examiner's report to the trustees of Communigrow

I report to the trustees on my examination of the accounts of the above charity ("the Trust") for the year ended 31/12/2022.

### Responsibilities and basis of report

As the charity's trustees, you are responsible for the preparation of the accounts in accordance with the requirements of the Charities Act 2011 ("the Act").

I report in respect of my examination of the Trust's accounts carried out under section 145 of the 2011 Act and in carrying out my examination, I have followed all the applicable Directions given by the Charity Commission under section 145(5)(b) of the Act.

### Independent examiner's statement

The charity's gross income exceeded £250,000 and I am qualified to undertake the examination by being a qualified member of The Chartered Institute of Management Accountants (CIMA).

I have completed my examination. I confirm that no material matters have come to my attention in connection with the examination which gives me cause to believe that in, any material respect:

- the accounting records were not kept in accordance with section 130 of the Charities Act; or
- the accounts did not accord with the accounting records; or
- the accounts did not comply with the applicable requirements concerning the form and content of accounts set out in the Charities (Accounts and Reports) Regulations 2008 other than any requirement that the accounts give a 'true and fair' view which is not a matter considered as part of an independent examination.

I have no concerns and have come across no other matters in connection with the examination to which attention should be drawn in this report in order to enable a proper understanding of the accounts to be reached.

Signed:

DocuSigned by:  
  
6FD2B9FC0FF2488...

Date: 30/05/2023

Name: Priscilla Asirifi ACMA

Relevant professional qualification(s) or body: CIMA

Address: 3 St Annes Place, Manchester, M34 5JB.



[www.communigrow.org.uk](http://www.communigrow.org.uk)

© Communigrow 2022 Registered Charity No. 1159534